

# WELCOME TO THE MORELAND STREET/MT PLEASANT AVENUE SLOW STREETS VIRTUAL WORKSHOP

*The presentation will begin in a few minutes.*



Your microphone is turned off.



[boston.gov/slow-streets/moreland-mtpleasant](https://boston.gov/slow-streets/moreland-mtpleasant)  
[vision.zero@boston.gov](mailto:vision.zero@boston.gov)  
617-635-1347



We will give you time to ask questions aloud.

# HI!



**Hannah Fong (she/her)**  
Planner, Active Transportation  
Boston Transportation Department  
hannah.fong@boston.gov



**Dan Merrow (he/him)**  
Sr. Engineer, Active Transportation  
Boston Transportation Department  
daniel.merrow@boston.gov

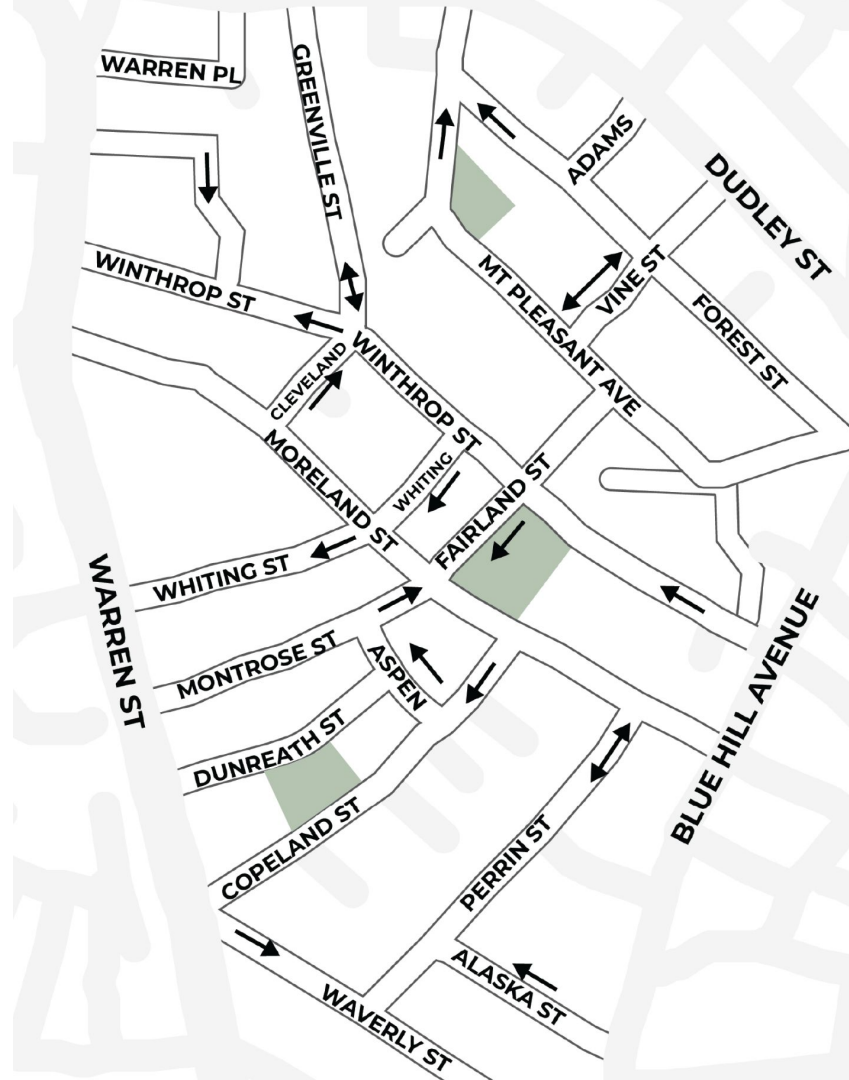


**Stefanie Seskin (she/her)**  
Active Transportation Director  
Boston Transportation Department  
stefanie.seskin@boston.gov

MORELAND ST. AND MOUNT  
PLEASANT AVE. HISTORIC  
DISTRICT

# Neighborhood Slow Streets Zone

May 6, 2021



# WHAT IS NEIGHBORHOOD SLOW STREETS?

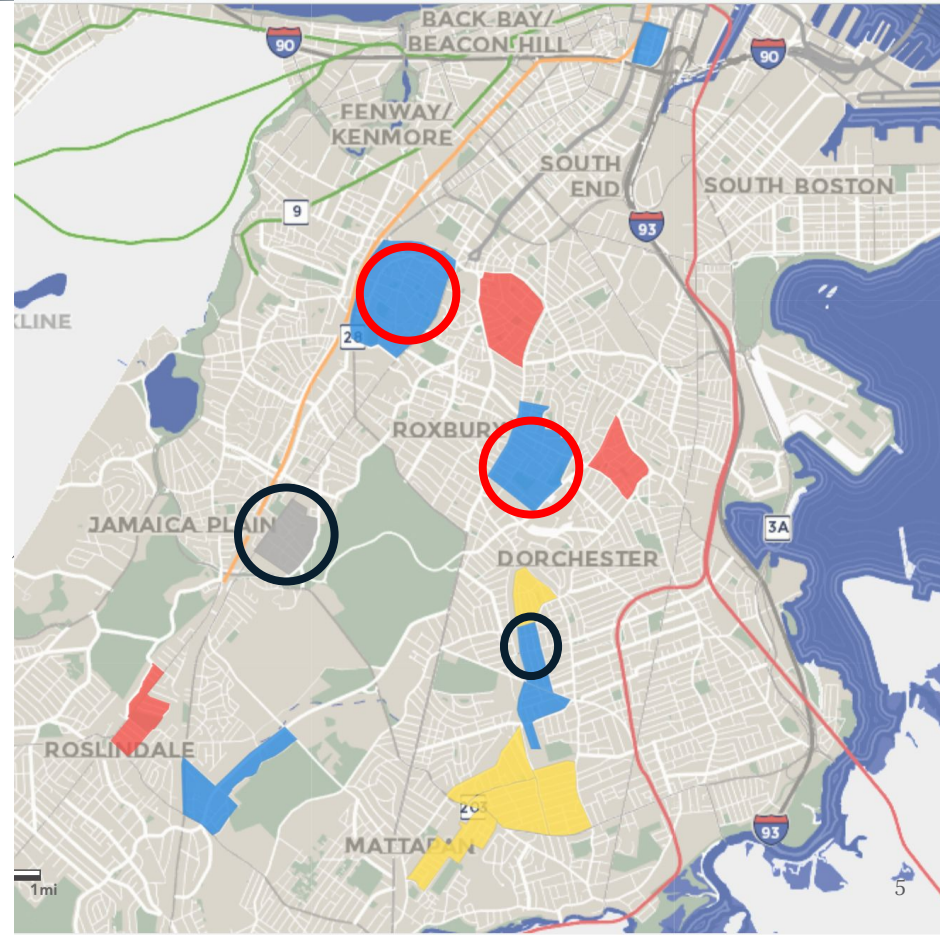
- ▶ Focus on safety on a connected network of small, **neighborhood** streets
- ▶ Built design changes to improve safety and slow speeds
- ▶ Posted speed limit of 20 MPH





# NEIGHBORHOOD SLOW STREETS ZONES

- ▶ We work in the areas with the highest need
- ▶ Fifteen zones to date:
  - Two zones have finished construction (black)
  - Two zones in construction right now (red)
  - 7 zones are ready for construction
  - Three new zones this year



# PRIORITIZING PLACES WITH THE HIGHEST NEED

*New zones are prioritized to serve our most vulnerable people, in our important community places, where crashes have happened.*

**ZONES WERE SCORED ON A SCALE OF 0 POINTS (LESS NEED) TO 100 POINTS (MOST NEED):**

UP TO 60 POINTS				UP TO 35 POINTS		UP TO 15 POINTS						
<b>ELDERS</b> % of population are over 65 years old (Census data)	+	<b>YOUTH</b> % of households with youth under 18 years old (Census data)	+	<b>DISABILITY</b> % of households with a person with a disability (Census data)	+	<b>COMMUNITY PLACES</b> Public schools, community centers, libraries, and parks within or on the border of the zone	+	<b>CRASHES ON MINOR STREETS</b> Crashes per mile on the smaller, neighborhood streets (EMS data)	+	<b>CRASHES ON MAJOR STREETS</b> Crashes at intersection of major streets and smaller, neighborhood streets (EMS data)	+	<b>CONNECTIONS</b> Nearby transit stops and stations as well as walking and biking networks identified in Go Boston 2030 and other neighborhood plans

# HOW WE APPROACH DESIGN

---

**Engage**  
residents in  
prioritizing **key**  
**focus areas**

**Prioritize** people  
walking and  
biking, older  
adults, youth,  
and people with  
disabilities

Reduce crashes  
that lead to  
serious **injury**  
or **fatality**

# HOW WE HEARD FROM YOU:

---

## BY MAIL

- ▶ letter and survey question mailed in late August

## INTERACTIVE SURVEY

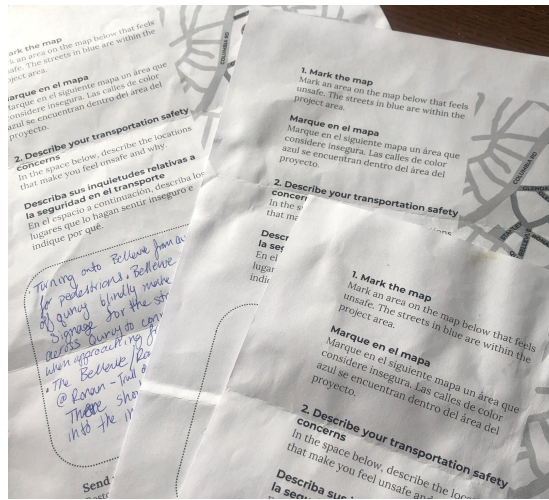
- ▶ open through December, published in English, Spanish, and Haitian Creole

## OUTDOOR WORKSHOP

- ▶ September 12, 2020 at Gertrude Howes Playground
- ▶ October 3, 2020 at Mount Pleasant Playground

# HOW WE GOT HERE

## YOUR LETTERS, COMMENTS



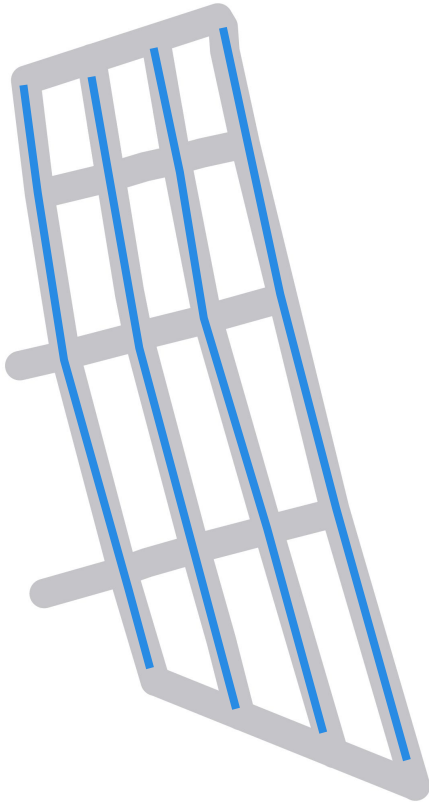
## OUR OBSERVATIONS



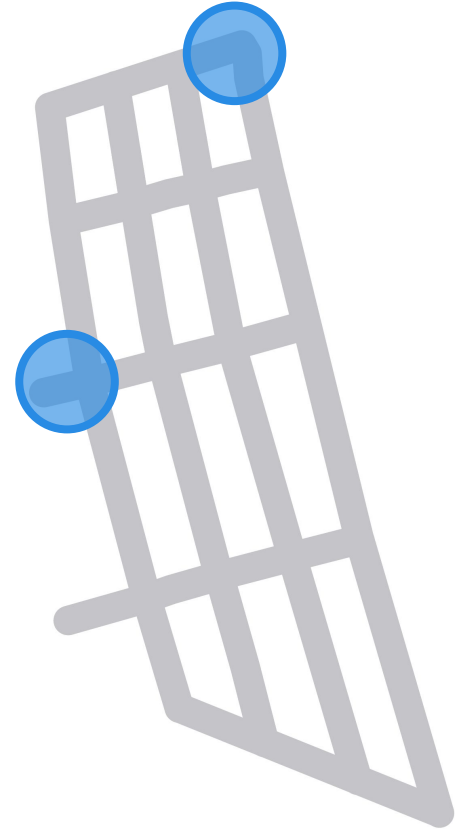
## DESIGN CONCEPTS



Some street design tools are for:  
**GENERAL CONCERNS**



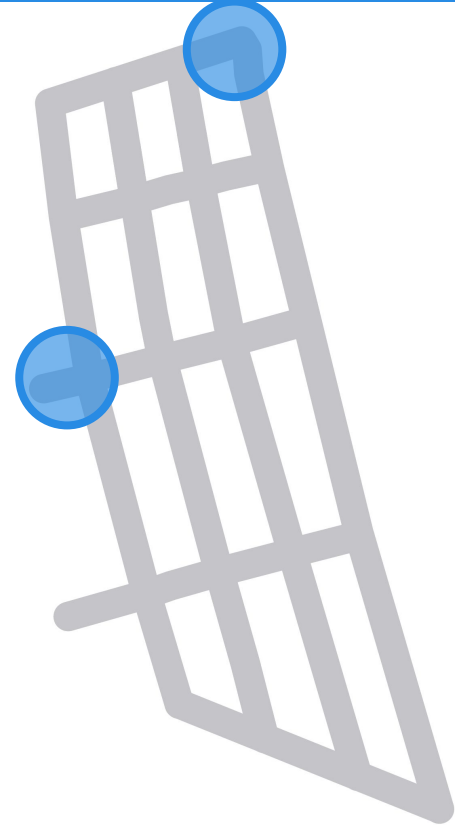
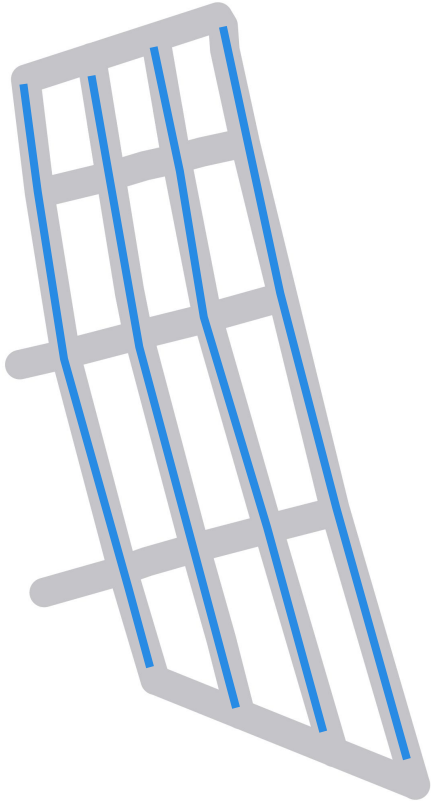
Some tools take more time/work:  
**FOCUS AREAS**



Today, we will share initial ideas for:

GENERAL CONCERNS

FOCUS AREAS







**Introduction**

**Explore Design Concepts**

**Engineering Study**

**Finalize Plan**

**Construction Notification**

**Construction**

**NOW**

Share  
concepts for  
focus areas

Develop  
general  
concepts for  
zone

Share  
concept  
plan with  
you

# CURB EXTENSIONS

Curb extensions create a shorter crossing. The sidewalk is extended into the street and provides more space for building an gradually sloping, accessible ramp.





# RAISED CROSSWALKS

Raised crosswalks are at the same level as the sidewalk. They slow drivers and make it easier to see people crossing.



# WITHOUT CLEAR CORNERS

Cars parked too close to the crosswalk can make it hard to see other drivers or people walking. This makes crashes at intersections more dangerous.





## WITH CLEAR CORNERS

When corners are clear, drivers will better see pedestrians and other drivers on cross streets. They will be more prepared to reduce their speed before hitting the crosswalk.



# **FOCUS AEA 1: MORELAND AND GERTRUDE HOWES PLAYGROUND**

---

- **Moreland/Fairland/Montrose**
- **Moreland/Copeland**



# Moreland Street at Gertrude Howes Playground

## *Your transportation safety concerns:*

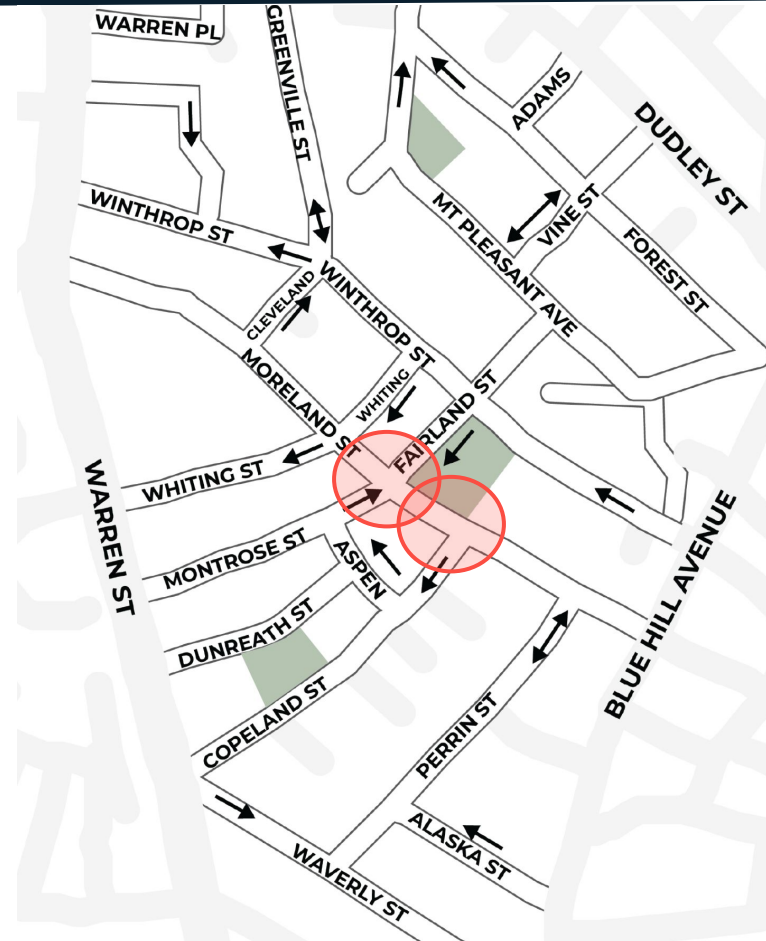
- ▶ Crossing the street does not feel safe
- ▶ Drivers don't stop for people at the crosswalks
- ▶ People roll through stops
- ▶ It is hard to see other people crossing the street at the intersection



# Moreland Street at Gertrude Howes Playground

## *What we observed:*

- ▶ Retaining walls and other property features at the street corners makes it hard to see people on cross-streets
- ▶ Any changes must work around maintaining required street width
- ▶ Need to work around engineering challenges



# MORELAND STREET

---

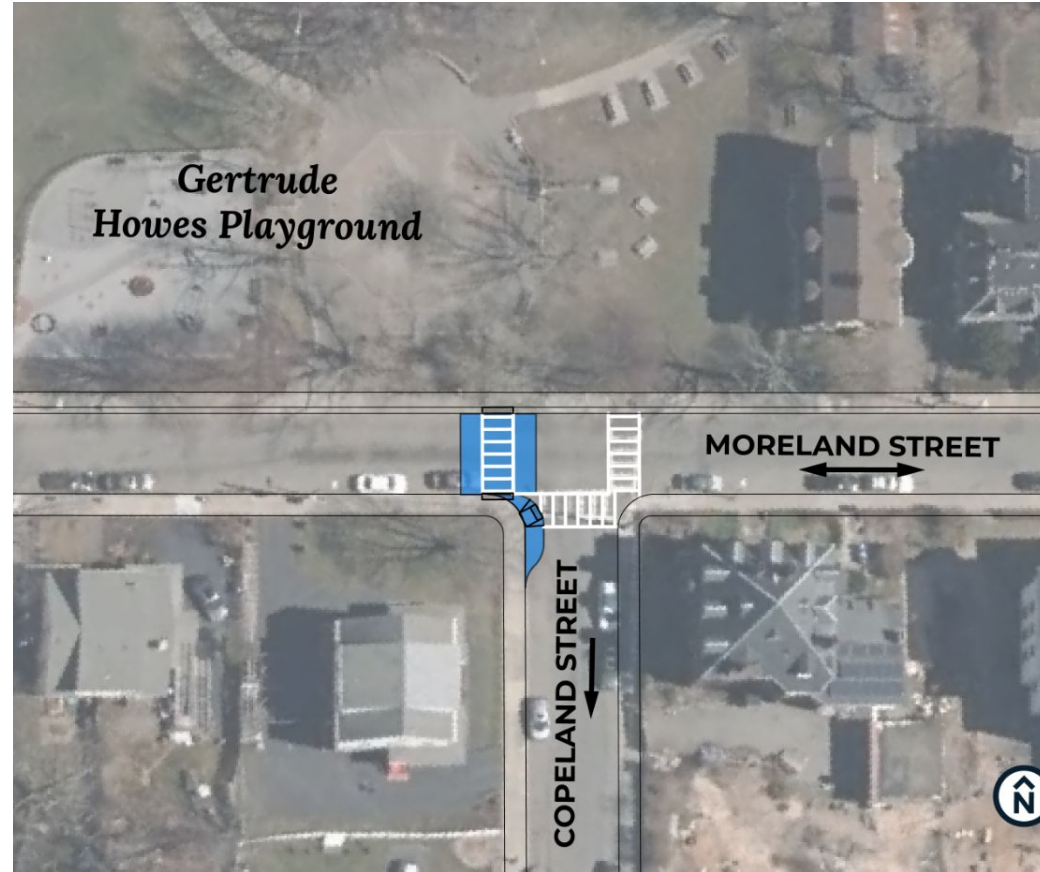
*Street design goals:*

- ▶ Provide **safe crossing** across Moreland Street to park and at
- ▶ Build **raised crossings** so drivers must slow down
- ▶ Address **visibility obstructions**

# PROPOSED IDEA: MORELAND & COPELAND

## A Option 1: Raised crosswalk

- ▶ Adds safe crossing to park entrance
- ▶ Add curb extension to create accessible crossing across Copeland Street



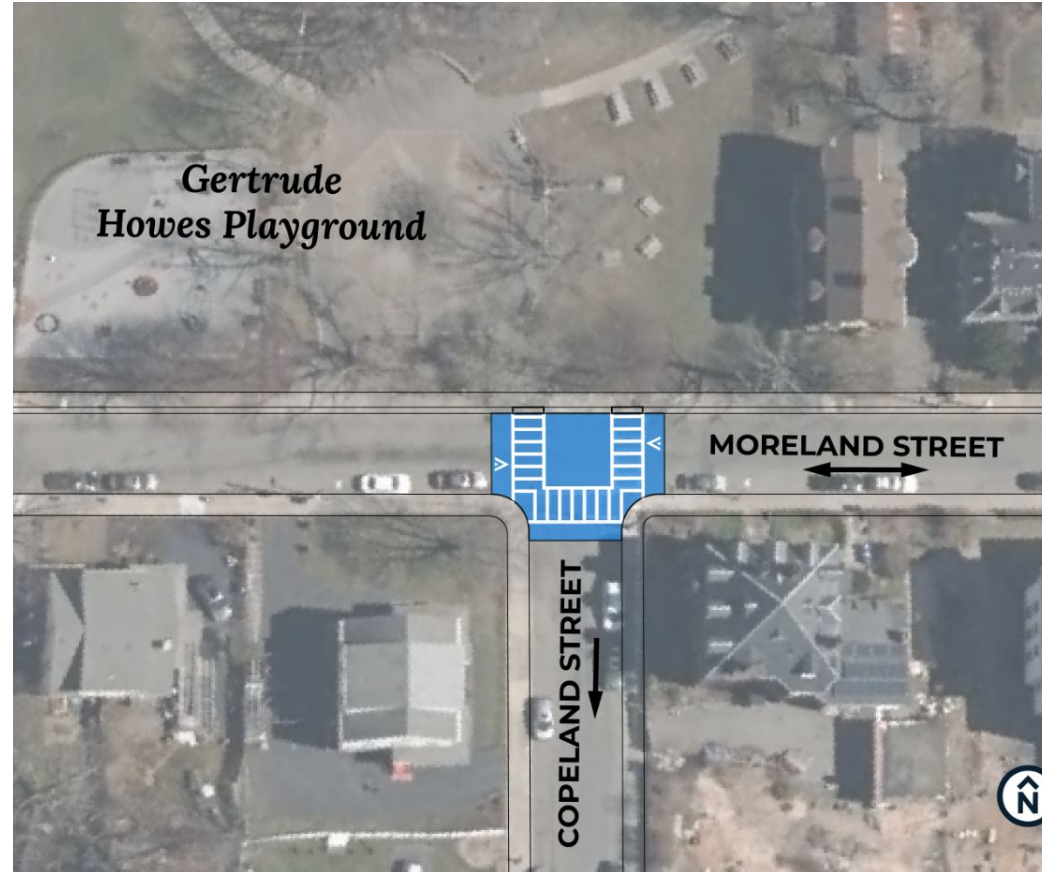
*Concept design subject to change with advanced engineering*



# PROPOSED IDEA: MORELAND & COPELAND

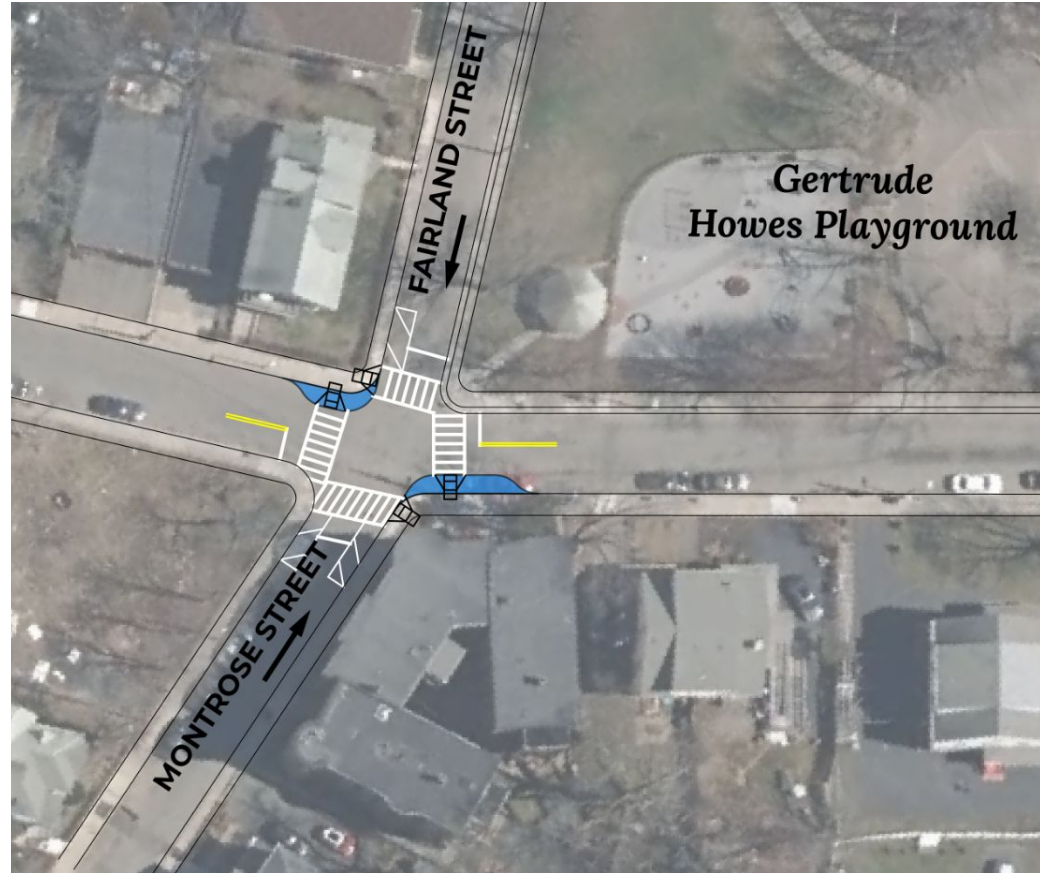
## B Option 1: Raised intersection

- ▶ Elevates whole intersection so all crosswalks are raised
- ▶ Creates more comfortable, accessible crossing



# PROPOSED IDEA: MORELAND, FAIRLAND, MONTROSE

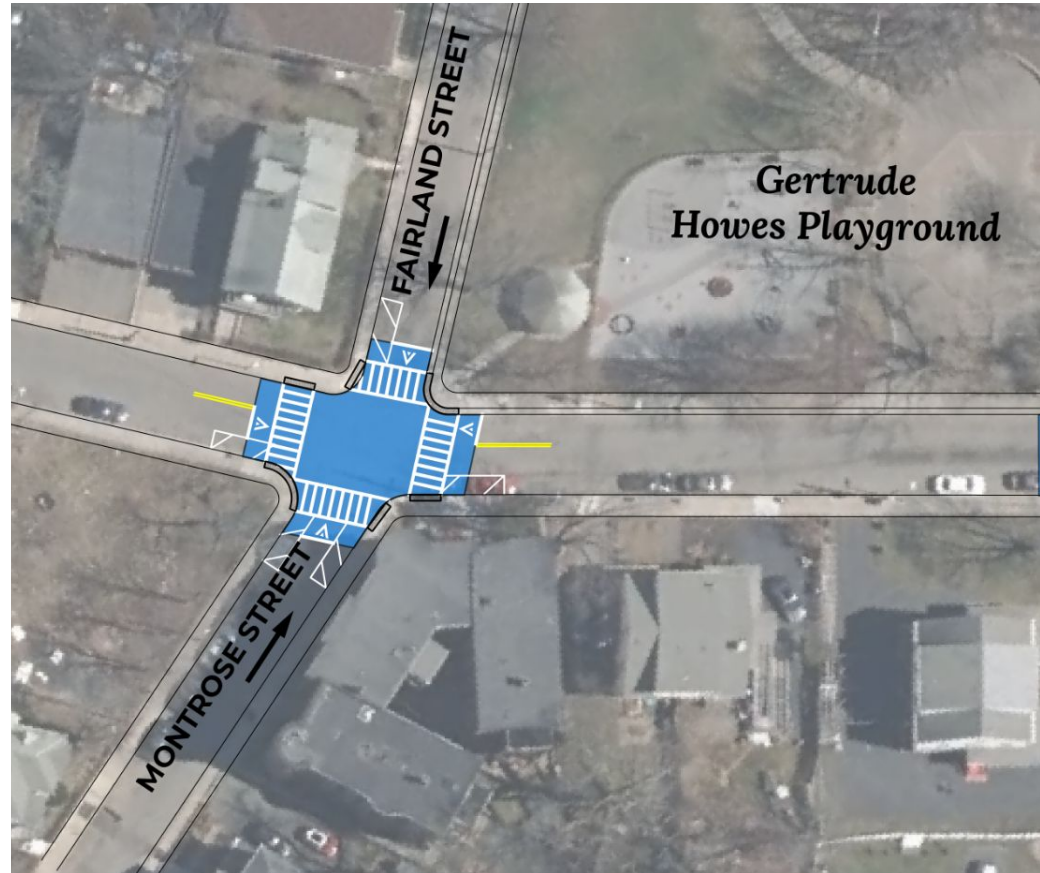
- A** Add curb extensions
- ▶ Extends sidewalks at corners so people crossing are more visible
  - ▶ Add markings and posts to corners so people do not park too close to crosswalk



# PROPOSED IDEA: MORELAND, FAIRLAND, MONTROSE

## B Add raised intersection

- ▶ Creates safe and accessible crossing for all streets
- ▶ Addresses visibility issues
- ▶ Add markings and posts to corners





# **FOCUS AREA 2: COPELAND ST**

---

# COPELAND STREET

*Your transportation concerns:*

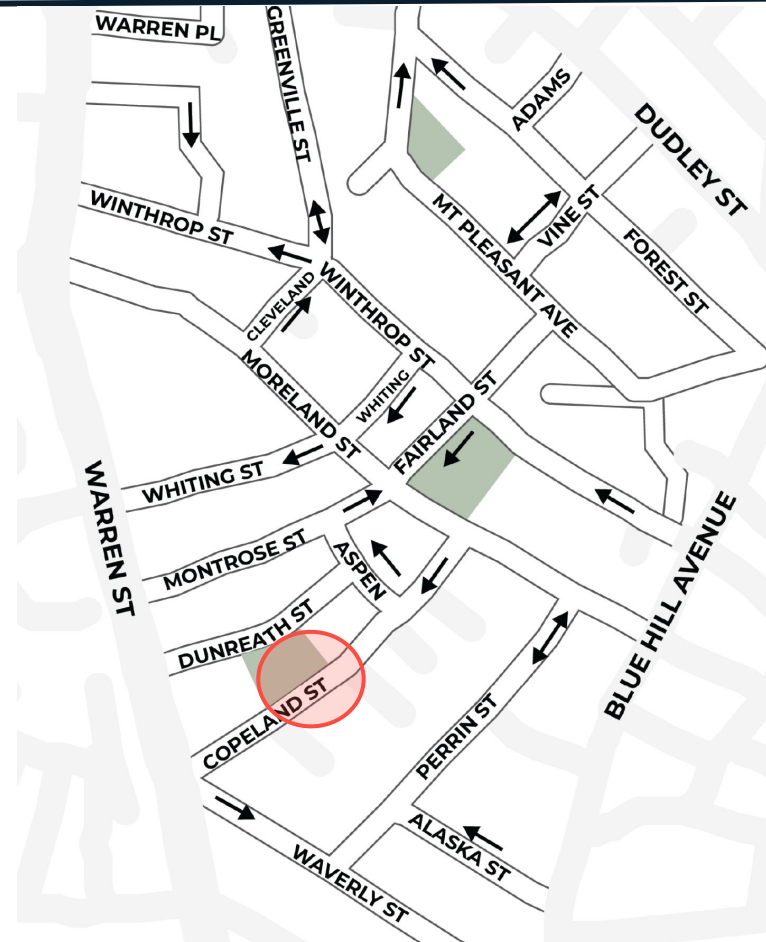
- ▶ People driving cannot see people crossing to park



# COPELAND STREET

## *Observations:*

- ▶ History of pedestrian crashes along street
- ▶ Bend in street causes visibility issues
- ▶ No place to cross to the park



# COPELAND STREET

## *Design goals:*

- ▶ Add safe, visible, accessible crossing to park
- ▶ Add curb extensions, which makes it easier for drivers to see pedestrians



**FOCUS AREA 2:  
MT PLEASANT AVENUE  
PLAYGROUND**

---



# MT PLEASANT AVENUE

---

## *Your concerns:*

- ▶ Tree obstructs visibility
- ▶ People speed down the Mt Pleasant Avenue
- ▶ No crosswalks



# MT PLEASANT AVENUE

---

## *Our observations*

- ▶ Crossings are not clear





# MT PLEASANT AVENUE

## *Design goals: curb extension*

- ▶ Add a safe, visible crossing
- ▶ Provides space for accessible ramps
- ▶ Slow people driving as they turn



# MT PLEASANT AVENUE

## *Design goals: raised crosswalk*

- ▶ Add safe crossing to park
- ▶ Slow drivers as they drive downhill on Mt Pleasant Avenue



## Introduction

Gather your concerns

Fieldwork

## Explore Design Concepts

**NOW**

Draw and share  
concepts for focus  
areas

Draw up general  
concepts for zone

Share concept  
plan with you

## Engineering Study

**FALL 2021**

Confirm we can build these  
ideas. We'll investigate ideas  
through engineering process

Review any changes & what  
the final plan will look like

## Finalize Plan

Collaborate with other City agencies  
and departments through multiple  
round of design review

Prepare engineering plans  
for construction

## Construction Notification

## Construction

**NO SOONER THAN SUMMER 2022**

# STAY IN TOUCH

---

- ▶ [boston.gov/slow-streets/moreland-mtpleasant](https://boston.gov/slow-streets/moreland-mtpleasant)
  - Sign up for emails
  - Check the latest news
- ▶ [slow.streets@boston.gov](mailto:slow.streets@boston.gov)
- ▶ 617-635-1347